

LYON[®]

Workspace Products

8000 SERIES STORAGE SHELVING UNITS

FOR HEAVY-DUTY APPLICATIONS

All pre-engineered sections are 36" wide, 84" high, with shelves adjustable on 1-1/2" centers. For double row, back-to-back installations, use economical open back shelving on one side, common backs of closed shelving sections on the other side. Some assembly required.

T-Post Uprights

Patented design, formed of tough, durable, hot rolled steel affords easy shelf adjustment on 1-1/2" centers using shelf clips.

Shelf Clips

Quickly lock into place, on either side of uprights. Disengages easily to re-position shelves, no tools needed.

Open Shelving Section

Ideal for storing packaged stock and other material where high visibility is a concern.

Closed Shelving Section

Can be used to divide work and storage space into separate areas.

Shelves

Patented Box "W" design provides added support to the front and rear of the shelf. Lapped and welded shelf corners provide added strength and durability. Available in 22-Gauge Box "W", 20-Gauge Box "W", 18-Gauge Box "W" and 18-Gauge Flanged. Capacity from 300 lbs to 1,300 lbs.

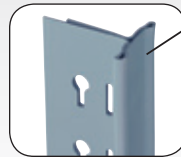


STORAGE SOLUTIONS.

1-800-323-0082
lyonworkspace.com



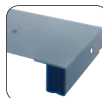
Shelf Clips
 All shelving units are shipped with 4 clips per shelf.



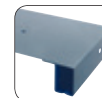
T-Post Uprights



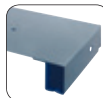
Open Shelving Section



22-Gauge Medium-Duty, Box "W" shelves provide up to 600 lb. capacity*.



20-Gauge Heavy-Duty, Box "W" shelves provide up to 900 lb. capacity*.



18-Gauge Extra Heavy-Duty, Box "W" shelves provide up to 1300 lb. capacity*.



18-Gauge Traditional Flanged shelves provide up to 700 lb. capacity*.

*Capacities are based on evenly distributed load. Maximum load capacity: 8000 lbs. per section and a maximum of 18" shelf spacing with no seismic.

Lyon Workspace Products • Aurora, IL



36" Wide Open Starter

36" Wide Open Add-On

**OPEN
SHELVING**



36" Wide Closed Starter

36" Wide Closed Add-On

**CLOSED
SHELVING**

No. of Shelves	36" w x 12" d x 84" h		36" w x 18" d x 84" h		36" w x 24" d x 84" h		36" w x 12" d x 84" h		36" w x 18" d x 84" h		36" w x 24" d x 84" h	
	STARTERS	ADD-ONS	STARTERS	ADD-ONS	STARTERS	ADD-ONS	STARTERS	ADD-ONS	STARTERS	ADD-ONS	STARTERS	ADD-ONS
22-GAUGE MEDIUM DUTY, BOX "W" OPEN SHELVING						22-GAUGE MEDIUM DUTY, BOX "W" CLOSED SHELVING						
5	8005SM	8005M	8006SM	8006M	8007SM	8007M	8037SM	8037M	8038SM	8038M	8039SM	8039M
6	8040SM	8040M	8041SM	8041M	8042SM	8042M	8260SM	8260M	8261SM	8261M	8262SM	8262M
6**	N/A	N/A	N/A	N/A	N/A	N/A	8270SM	8270M	8271SM	8271M	8272SM	8272M
7	8030SM	8030M	8031SM	8031M	8032SM	8032M	8090SM	8090M	8091SM	8091M	8092SM	8092M
8	8020SM	8020M	8021SM	8021M	8022SM	8022M	8080SM	8080M	8081SM	8081M	8082SM	8082M
20-GAUGE HEAVY DUTY, BOX "W" OPEN SHELVING						20-GAUGE HEAVY DUTY, BOX "W" CLOSED SHELVING						
5	8005SH	8005H	8006SH	8006H	8007SH	8007H	8037SH	8037H	8038SH	8038H	8039SH	8039H
6	8040SH	8040H	8041SH	8041H	8042SH	8042H	8260SH	8260H	8261SH	8261H	8262SH	8262H
6**	N/A	N/A	N/A	N/A	N/A	N/A	8270SH	8270H	8271SH	8271H	8272SH	8272H
7	8030SH	8030H	8031SH	8031H	8032SH	8032H	8090SH	8090H	8091SH	8091H	8092SH	8092H
8	8020SH	8020H	8021SH	8021H	8022SH	8022H	8080SH	8080H	8081SH	8081H	8082SH	8082H
18-GAUGE EXTRA HEAVY DUTY, BOX "W" OPEN SHELVING						18-GAUGE EXTRA HEAVY DUTY, BOX "W" CLOSED SHELVING						
5	8005SX	8005X	8006SX	8006X	8007SX	8007X	8037SX	8037X	8038SX	8038X	8039SX	8039X
6	8040SX	8040X	8041SX	8041X	8042SX	8042X	8260SX	8260X	8261SX	8261X	8262SX	8262X
6**	N/A	N/A	N/A	N/A	N/A	N/A	8270SX	8270X	8271SX	8271X	8272SX	8272X
7	8030SX	8030X	8031SX	8031X	8032SX	8032X	N/A	N/A	N/A	N/A	N/A	N/A
8	8020SX	8020X	8021SX	8021X	8022SX	8022X	N/A	N/A	N/A	N/A	N/A	N/A
18-GAUGE TRADITIONAL FLANGED OPEN SHELVING						18-GAUGE TRADITIONAL FLANGED CLOSED SHELVING						
5	8005S	8005	8006S	8006	8007S	8007	8037S	8037	8038S	8038	8039S	8039
6	8040S	8040	8041S	8041	8042S	8042	8260S	8260	8261S	8261	8262S	8262
6**	N/A	N/A	N/A	N/A	N/A	N/A	8270S	8270	8271S	8271	8272S	8272
7	8030S	8030	8031S	8031	8032S	8032	8090S	8090	8091S	8091	8092S	8092
8	8020S	8020	8021S	8021	8022S	8022	8080S	8080	8081S	8081	8082S	8082

**Note: Back open with lateral cross brace.

Shelf Load Capacities for 8000 Series Shelving

Size W x D	22-Ga. Medium Box "W"		20-Ga. Heavy Duty Box "W"		18-Ga. Extra Heavy Duty Box "W"		18-Ga. Traditional Flanged	
	Cat. No.	Capacity	Cat. No.	Capacity	Cat. No.	Capacity	Cat. No.	Capacity
30" x 30"	N/A	N/A	8593H	800 lbs.	N/A	N/A	N/A	N/A
36" x 12"	8560M	600 lbs.	8560H	800 lbs.	8560X	1150 lbs.	8560	550 lbs.
36" x 15"	8584M	600 lbs.	8584H	825 lbs.	8584X	1200 lbs.	8584	600 lbs.
36" x 18"	8561M	600 lbs.	8561H	900 lbs.	8561X	1300 lbs.	8561	650 lbs.
36" x 24"	8562M	600 lbs.	8562H	800 lbs.	8562X	1150 lbs.	8562	700 lbs.
36" x 30"	N/A	**	8585H	740 lbs.	8585X	950 lbs.	8585	500 lbs.
36" x 36"	N/A	**	8586H	640 lbs.	8586X	850 lbs.	8586	450 lbs.
42" x 12"	N/A	**	8565H	650 lbs.	8565X	830 lbs.	8565	500 lbs.
42" x 15"	N/A	**	8587H	650 lbs.	8587X	880 lbs.	8587	475 lbs.
42" x 18"	N/A	**	8566H	720 lbs.	8566X	900 lbs.	8566	450 lbs.
42" x 24"	N/A	**	8567H	700 lbs.	8567X	880 lbs.	8567	500 lbs.
42" x 30"	N/A	**	8588H	650 lbs.	8588X	850 lbs.	8588	400 lbs.
42" x 36"	N/A	**	8589H	625 lbs.	8589X	820 lbs.	8589	325 lbs.
48" x 12"	N/A	**	8300H	600 lbs.	8300X	750 lbs.	8300	350 lbs.
48" x 15"	N/A	**	8590H	600 lbs.	8590X	700 lbs.	8590	325 lbs.
48" x 18"	N/A	**	8301H	600 lbs.	8301X	700 lbs.	8301	300 lbs.
48" x 24"	N/A	**	8302H	560 lbs.	8302X	750 lbs.	8302	300 lbs.
48" x 30"	N/A	**	8591H	540 lbs.	8591X	730 lbs.	8591	300 lbs.
48" x 36"	N/A	**	8592H	480 lbs.	8592X	640 lbs.	8592	300 lbs.

**Please consult your factory representative, Lyon does not generally recommend 22-gauge on industrial shelving requirements larger than 36" x 24"